



G+ Overview



Why health and safety?

Update: Worker On Board Wind Pioneer Injured by Fire Hose



British and Danish authorities have started an investigation to determine the root cause of **the accident** in which a worker on board the jack up vessel Wind Pioneer was injured on Saturday, 20 February, while the vessel was carrying out maintenance work at the 172MW Gunfleet Sands offshore wind farm.

The injured worker suffered a laceration to his right shin, seemingly caused by a fire hose being pressurized, DBB Jack-Up, the owner of the Wind Pioneer, said in a statement.



Fluor, Siemens sentenced to pay £650k after Gabbard fatality

Health and Safety Executive case brought following 2010 accident



Company fined after worker is fatally crushed in trench

Date:

5 May 2016

A company has been fined £2.6 million after an employee was killed when the trench he was working in collapsed on him in Lancashire.

James Sim, a 32-year-old worker, from Barry, South Wales, a sub-contractor working on behalf of Balfour Beatty Utility Solutions Limited. On the 14 April 2010, Mr Sim was working in a trench, laying ducting for new cable for an offshore windfarm that was being built off the coast by Heysham, Lancashire. The trench was dug to a depth of 2.4 metres, without any shoring. Mr Sim was killed when he became trapped in the trench after it collapsed on him.

GERMANY



Diver killed on Riffgat offshore wind farm

15 July 2013 by James Quilter [Be the first to comment](#)

GERMANY: A diver has been killed during the construction of EWE and Enova's 108MW Riffgat wind farm in the German North Sea.



It is the third death of a diver on a German offshore wind farm since 2010.

Safety Alert Issued on Butendiek OWF Accident



A serious accident occurred in the night of Sunday 6 July 2014 at the German offshore wind farm Butendiek. The victim, a Danish employee hired by Ballast Nedam, was admitted to the hospital in critical condition.

Due to the seriousness of his injuries, he spent 6 weeks in hospital. He will need further surgery

and his recovery will take a considerable amount of time.



Who are the members of G+?

Our member relationships are central to what we do. Collaboration within our community and shared data contributes to more frontline offshore wind workers getting home safely.

Members



Associate Members



Governance and structure

G+ Board

- Primary review & decision making
- Demonstrate visible leadership
- To reach key decisions and agreements
- Decide on strategic direction

Energy Institute

- Provides the Secretariat

G+ Focal Groups

- Actions to improve H&S performance
- Share information and data
- Develop learning's from incidents
- Run work programme to develop industry guidance on safety
- Support the Board to demonstrate leadership

Board of Directors

Ørsted



Lisbeth Norup Frømling

IBERDROLA



Natalia Planillo

**JERA
NEX
BP**



Giles Mackey

**OW
OCEAN WINDS**



Richard Pargeter

equinor



Beate Myking

TotalEnergies



Nicolas Wawresky

**edf
renewables**



Pierre-Emmanuel Guillot

VATTENFALL



Pavlo Malysenko

**SIEMENS Gamesa
RENEWABLE ENERGY**



Graeme Paterson

Vestas



Tyrone Singleton

RWE



Karin Borg

**sse
Renewables**



Michelle Ruane

AGM

EI G+ Secretariat

**G+ Focal Group
US**

**G+ Focal Group
Europe**

**G+ Focal Group
APAC**



G+ Secretariat

Kate Harvey
General Manager



Martin Maeso
EI lead & Co Secretary



The G+ team



Mariana Carvalho
Technical Manager



Caren Hsiao
APAC Representative



Edwin Sheppard
Technical Manager - Data



Beate Hildenbrand
Head of Americas



Olivia Burton
Senior Technical Officer



Emma Mills
Technical Officer



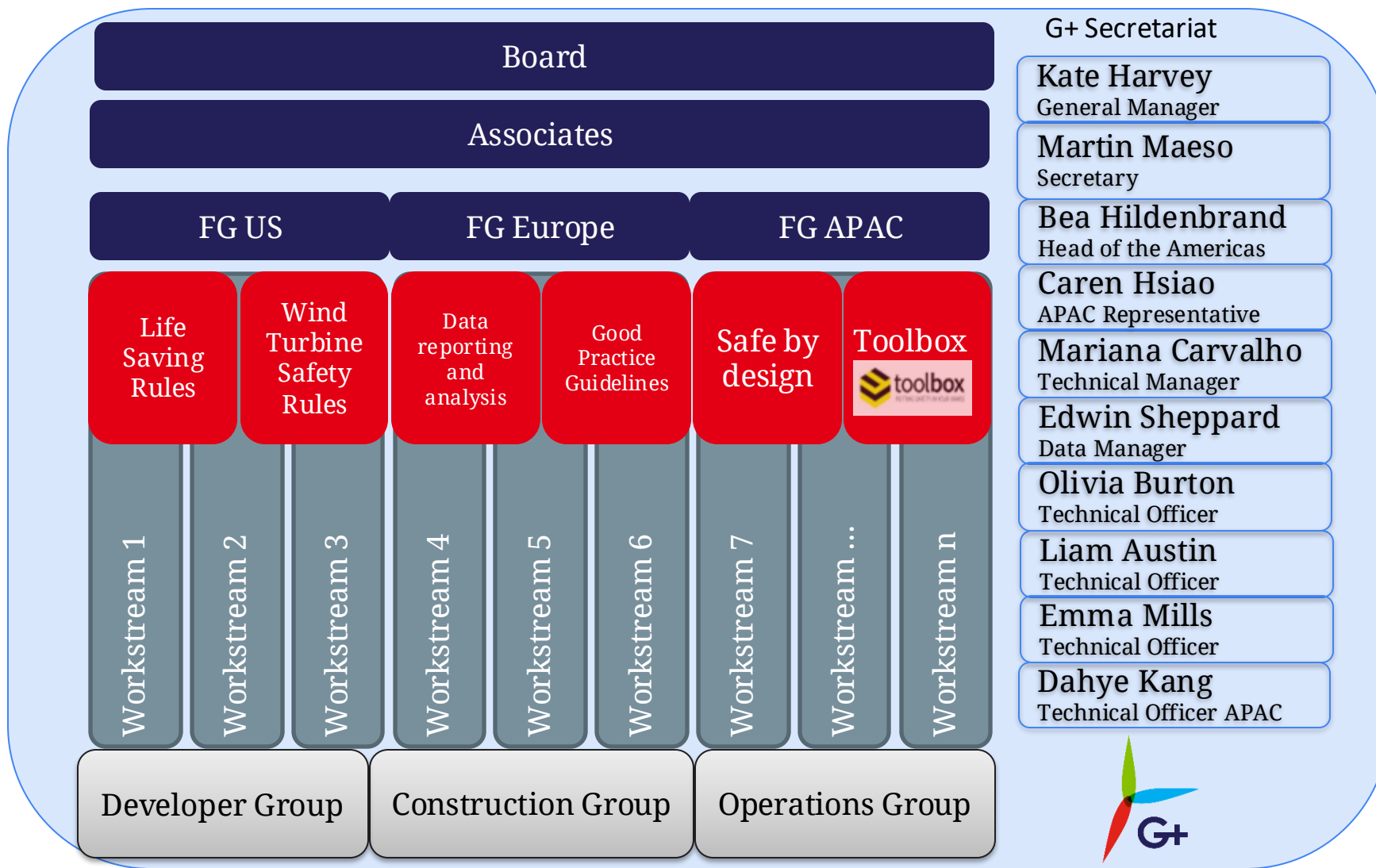
Liam Austin
Technical Officer



Dahye Kang
APAC Technical Officer

Supported by





Unlocking the power of data

G+ member data is analysed and shared through six main programmes to give a holistic view of health and safety performance and measurable proof of improvements and performance.



Incident data reports

- Understanding of offshore wind industry risk profile
- Evidence base to inform interventions
- Accurate assessment of industry H&S performance
- Tool for comparison of H&S performance against other comparable industries



Good practice guidelines

- Recommendations for procedures, controls, ways of working at offshore wind farms
- Minimum standard expected for meeting industry H&S expectations
- G+ members self check compliance against GPG content
- Referenced in site and company corporate documents



Safe by Design programme

- Examine the current design controls relating to the topic, discuss where current design has potentially failed, and identify potential opportunities for improvement
- Outputs published and used as a reference by the industry
- Act as a catalyst for further discussion and research within the industry

Unlocking the power of data



Sharing incident learnings

- Incident learnings to be shared through Toolbox
- Toolbox is an EI web-based app
- Is accessible to all, anywhere, any place, any time

<https://toolbox.energyinst.org/>



Wind Turbine Safety Rules (WTSR)

- Help formalise a Safe System of Work (SSoW)
- Onshore and offshore
 - Developed in collaboration with SafetyOn
- Safeguards persons from the mechanical plant and LV apparatus and the associated system derived hazards.



Life Saving Rules (LSR)

- Clear and simple statements to follow, most relevant for offshore wind
- Supports those new to the industry.
- Easy to align with contractual requirements, representing a common denominator
- Includes full implementation starter pack – slides, posters guide, question set and translations.



G+ Power BI Dashboard

- Our new and improved Power BI dashboard is live: <https://www.gplusoffshorewind.com/work-programme/workstreams/statistics>
- Data can be filtered, and graphs show patterns over time
- Presents all our incidents between 2014 to 2023

The screenshot shows the dashboard's main interface. At the top center is the G+ logo and the text "G+ 2023 Annual Report Power BI Dashboard". Below this is a "Tutorial" button. The main area contains two columns of blue buttons for filtering data by "YTD" (Year-to-Date) and "All" (All time). The buttons are: "Breakdown - YTD", "Breakdown - All", "Hours, TRIR, and LTIF - YTD", "Hours, TRIR, and LTIF - All", "ERME, HP, and Dropped Object - YTD", "ERME, HP, and Dropped Object - All", "Country - YTD", "Country - All", "Incident Table - YTD", "Incident Table - All", "Actual Consequences", "Work Process", and "Incident Area".



Good practice guidelines

Current G+ GPGs (see the G+ website for translations)

Arc flash labelling

Contractor engagement and behavioural safety in onshore civils (w/SafetyOn)

DROPS Reliable securing
(w/SafetyOn)

Emergency Response (IOER)

Floating OW HAZID

Helicopter Operations Section A | Section B

Improving compliance workshop: basic lifting operations

Offshore wind farm transfer

Reducing manual handling / ergonomics incidents

Safe by Design implementation guide

Safe management of small service vessels

Steel fabrication

Unmanned Aircraft Systems (UASs)

Working at height

Marine Coordination



Safe by Design Programme

Current G+ Safe by Design Workshop reports

Blades access/
repair

Davit cranes

Escape from
nacelle (fire)

Floating Offshore
Wind

Hydraulic
torqueing and
tensioning systems

Marine transfer
and access

Material handling
equipment

Walk-to-Work (w/IMCA)

WTG access and
egress

WTG access to the
TP (below airtight
deck)

WTG service lifts

WTG service lifts –
follow-up

WTSR and wider research

Wind Turbine Safety Rules (4th edn | w/ SafetyOn)

Workshops report: Electrical safe system of work (w/ SafetyOn)

Ladder climbing research

Examining the impact of floating wind turbines on the human operator: A scoping review

Human-Free Offshore Lifting Solutions



Lifesaving rules for the offshore wind industry

Working Responsibly



Always ensure the required plans and permits are in place before you start a job



Always use tools and equipment that are fit for the intended purpose



Never undertake any job unless you have been trained and assessed as competent



Never work, or operate vehicles or machinery, while under the influence of drugs or alcohol

Working with Electricity



Always verify isolation and zero energy before work begins

Working at Height



Always use fall protection when working at height

Out of harms way



Always secure tools, loose materials and equipment to prevent them from falling



Never place yourself under a suspended load during lifting



Always adhere to barriers and exclusion zones

Transfer Operations

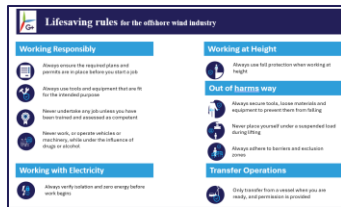


Only transfer from a vessel when you are ready, and permission is provided

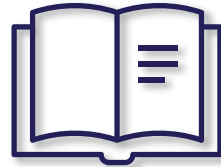


Not just a set of rules

1 Set of Life Saving Rules



2 Implementation guidance for companies



Start safe, stop if unsure

3 Slide packs



4 Support the front-line



Ask yourself, your team, your supervisor

5 Launch and communication



[Translations include: Chinese, German, Spanish, Japanese and Korean](#)

6 Monitor and improve



We will collect the data to understand the impact and applicability of the rules, and commit to adapting our rules as needed by the industry.

G+ current work programme

	Continuing in 2026		Approved 2026 Workstreams
<i>OW 2503</i>	Incident data reporting – New elements	<i>OW 2605</i>	GPG programme maintenance and implementation
<i>OW 2506</i>	Welfare (phase 2) - Plan to continue with cairn risk	<i>OW 2606</i>	GPG review for revisions: EI3262 Working at Height
<i>OW 2508</i>	Feasibility and Viability trial: Physical Capacity Assessment	<i>OW 2607</i>	First Aid and Medical needs assessment in OW
	Standard/Recurring	<i>OW 2608</i>	W2W: Collaboration of G+ and IMCA members and Partners
<i>OW 2601</i>	G+ Comms and Engagement	<i>OW 2609</i>	Coordinated Offshore Wind Emergency Response Framework in APAC (IOER)
<i>OW 2602</i>	Incident Data Reporting	<i>OW 2610</i>	Implementation G+ Lifting Framework in APAC
<i>OW 2603</i>	Safety Alerts and Sharing Info - Toolbox	<i>OW 2611</i>	Fabrication Safety Collaboration Forum – Year 2
<i>OW 2604</i>	Safe by Design programme - Hatches		



EI Tech Membership

A not-for-profit registered charity, the EI promotes and advances knowledge, skills and good practice in energy for society's benefit.

[EI Publishing website](#) hosts technical guidance documents, research papers and standards to support the energy industry.

G+ Members can access these technical committees:

Ageing and life extension

Carbon capture and storage

Corrosion management/asset integrity

Environmental protection

Fuels distribution

Health, human and organisational performance

Learning from incidents

Hydrocarbon management

Hydrogen

Offshore wind

Onshore wind

Process safety

Test methods standardization.

AMEI



If you work for a company which holds corporate membership with the EI, you will be eligible for complimentary individual membership as an **Associate Member (AMEI)**

Why join?

Unlock your Associate Member benefits

- Use of AMEI post nominals
- Access to *EI Connect* mentoring platform
- Free and discounted training via *EI Academy*
- *Energy Futures* newsletter and other member updates
- Weekly digital magazine, *New Energy World*
- Free, confidential advice via *EI Assist*
- Support to help you progress to professional membership and chartered status





How to sign up



- 1) Check if your company is a member of the EI [here](#)
- 2) If yes, register for your own online account [here](#) and make sure you use your **company email address**
- 3) After email verification, follow the steps to join as an **Associate Member (AMEI)** [here](#)
- 4) You're in! Spread the word to your colleagues and make the most of your membership

Need a bit of help? Contact us at
companies@energyinst.org



Contact Details



www.gplusoffshorewind.com



@gplusglobalofw



@G+ Global Offshore Wind Health and Safety Organisation



gplus@energyinst.org